

S65E C - S65E

Touch



Professional Wheel Balancer Semi-Automatic Touchscreen

For tire service centers, dealerships, and workshops with medium workload

Available with manual locking (S65E) or with automatic Pneulock locking system (S65E C), for faster operations and uncompromising centering precision.



S 65E C Touch version

Reliability as always Innovation like never before!



S65E C - S65E

Touch



MAIN FEATURES

TOUCHSCREEN INTERFACE

Monitor touchscreen Industrial 19" touch-screen monitor. It resists dust, dirty or wet hands and is suitable for use with any type of gloves..

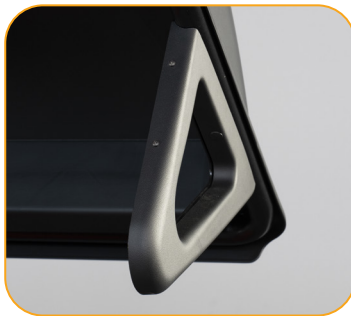
Quick and user-friendly **graphic interface**



WHEEL DIMENSIONS DETECTION

Digital gauge for distance and diameter acquisition up to 28" with **QP (Quick Program)** function that automatically activates balancing programs.

The arm can also be equipped with the **Laser X system** (opzionale) that guides the operator in the selection of the alloy rim internal planes without errors and with excellent visibility.



The **Sonar ES-7** measuring sensor is available for the automatic contactless measurement of the wheel width (optional)..



APPLICATION OF ADHESIVE COUNTERWEIGHTS

Adhesive counterweights can be applied very quickly by using the **laser pointer at 6 o'clock** (laser line system) or by using the **weight holder clip** (optional) or **manually at 12 o'clock**.

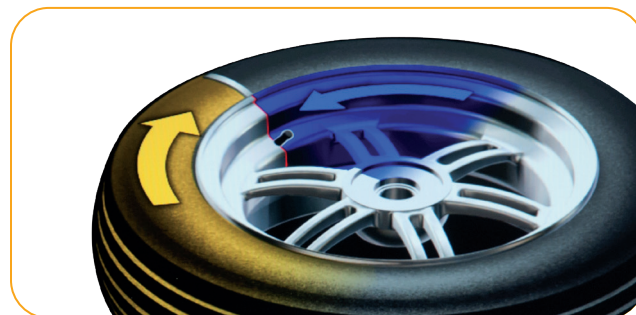


EVERY PROGRAMME FOR THE PROFESSIONAL



HIDDEN WEIGHT

Programme for concealing counterweights behind spokes for improved wheel aesthetics.



OPT

Programme indicating ideal wheel/tyre assembly position to reduce overall wheel imbalance.

AWC FUNCTION

Automatic calculation of the width (**AWC function**) even if the ES-7 external sensor is not present. The wheel balancer calculates the width by reducing the operational time.

Automatic positioning, electric brake, multi-operator mode, simplified calibration, integrated service and diagnostic functions... and much more!

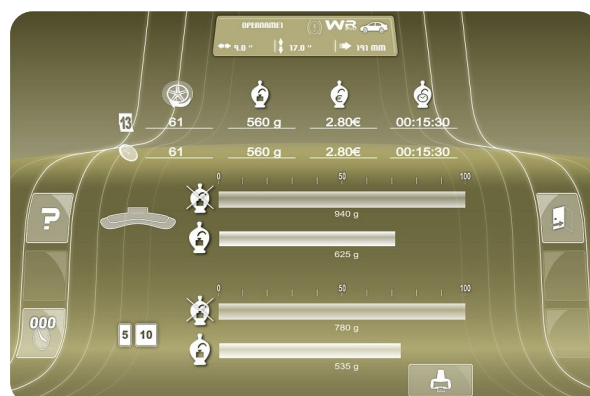
SPECIAL PROGRAMMES

WR WEIGHT REDUCTION EVO



Reduce working time by up to 20% and the use of counterweights by up to 30%, with immediate economic and environmental benefits. A program designed for those aiming at faster and more sustainable balancing.

Thanks to the three on-screen counters, you can monitor in real time the savings achieved in weight, time, and money



More efficiency, less waste, zero complications

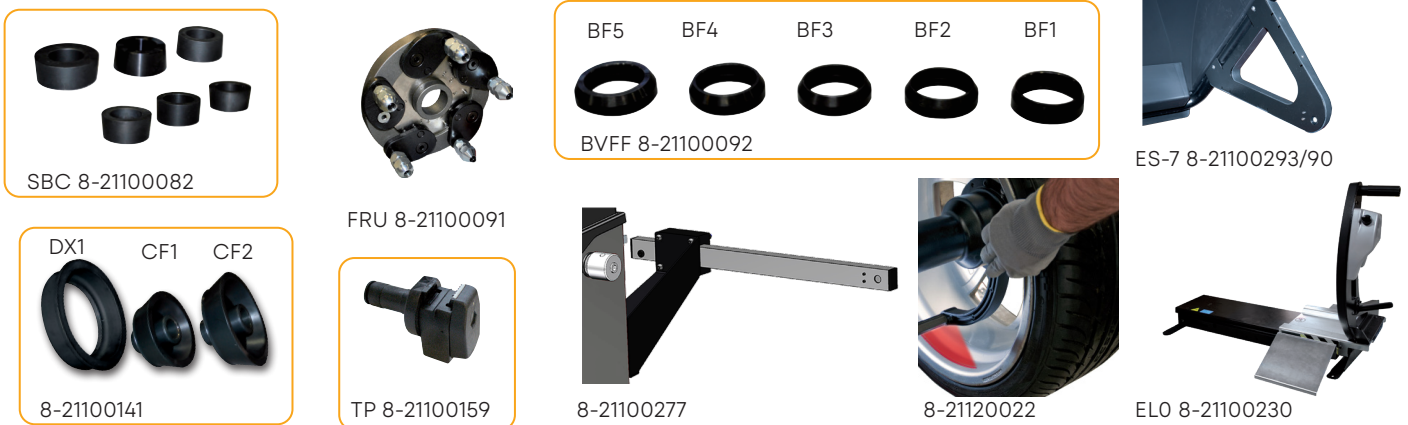
S65E C - S65E

Touch

STANDARD ACCESSORIES

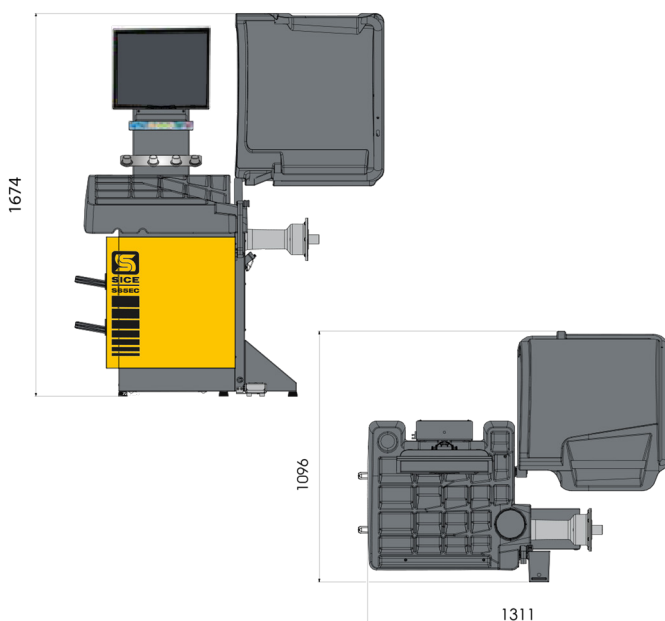


RECOMMENDED ACCESSORIES



SBC Set of six bushings for reverse side centring | **FRU** Universal self-centring flange for wheels with or without central hole, hole \varnothing min. 90 max. 210 mm | **BCF** Set of five bushings for precise centring on FRU flange | **ES-7** Automatic sensor wheel width | **DX-CBF** Centring accessory for van and off-road wheels with central hole with \varnothing 117÷173 mm | **TP** Universal self-centring flange for wheels without central hole | **8-21100277** Run-out RRS-2 Diagnosis kit | **8-21120022** LaserX Laser pointer built in the internal digital detector arm, diameter/distance | **EL-O** "Weightless effect" wheel lifter (See separate catalogue for further accessories).

TECHNICAL DATA



Power supply voltage	115/230v - 1Ph - 50/60Hz
Total power absorption	122 W
Pressure compressed air (S 65E C)	7 ÷ 10 bar (105 ÷ 165 psi)
Spinning speed	90 ÷ 130 rpm
Max. unbalance value calculated	999 g
Unbalance measurement accuracy	1g (0,0353 oz)
Average measurement time	7 s
Shaft diameter	40 mm (1,57")
Rim width setting range	1,5" ÷ 20"
Rim diameter setting range	1" ÷ 35"
Rim diameter measurable	10" ÷ 28"
Max. wheel width	600 mm (23,6")
Max. wheel diameter	1117 mm (44")
Maximum wheel/machine distance	275 mm (10,82")
Max. wheel weight (ground fastening)	85 kg
Machine weight (without accessories)	195 kg (S 65E) - 198 kg (S 65E C)
Max. Dimensions (L x H x P)	1597 x 1669 x 1122 mm

The manufacturer reserves the right to modify the features of its products at any time